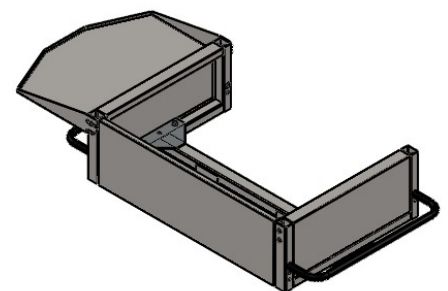


(A) These parts are already installed at the factory.

ITEM NO.	PART NUMBER	DESCRIPTION	QTY
1	372951	Weldment, Cradle, MVP	1
2	372961	Back Panel, MVP	1
3	372964	Pin, Spring, Rear Panel	2
4	372930	Table, Side, PK MVP	2
5	372866	Spacer, Table	10
6	372869	Washer, Flat M6 SS	10
7	372902	Bolt, M6 x 16 Button Head	14
8	372933	Swing Bolt Weldment	2
9	372965	Weldment, MVP Side, Left	1
10	372966	Weldment, MVP Side, Right	1
11	372948	Bolt, M8 x 50	6
12	372911	Nut, M8 Nylock	6
13	372967	Weldment, MVP Handle	2

(A)

(A)



1-4-2012

## **Congratulations on your new Party King Grill Cradle!**

It was shipped to you in a nice, flat package to save you money on shipping. Assembly is very simple, and will only take a few minutes.

A. Put all the nuts and bolts and small parts in a cake pan or cookie sheet so you can see them and find what you need without digging through a bunch of plastic bags.

B. Make sure you have enough space to work. If you are working on a concrete floor, spread out some cardboard or a rug so you don't scratch the paint on your new Grill Cradle.

### **Assembly**

**1.** Get out the **Cradle Weldment** (1), the **Right Side** (10), and the **Left Side** (9), and six **M8 Bolts** (11), and six **M8 Nylock Nuts** (12).

Make sure you have things aligned just like the picture-- the knobs on the swingbolt clamps go toward the back of the cradle. Slide the **Right Side** (10) between the plates on the end of the **Cradle Weldment** (1), and install three of the **M8 Bolts** (11), and **M8 Nylock Nuts** (12). Leave the bolts loose.

Now install the **Left Side** (9) the same way.

**2.** Find the **Handles** (13), and bolt them to the **Sides** with 4 of the **M6 Bolts** (7). The **Handle** should slide into the large holes in the **Sides**. Tighten the bolts.

**3.** The **Side Tables** (4) go on next. Get 8 each of the **M6 Bolts** (7), the **M6 Flat Washers** (6), and the **Spacers** (5).

Put a **Bolt** through a **Washer**, and then through a **Spacer**.

Now take that little stack of parts and go through the slot in the **Side Table**, and screw it into the top hole in the frame.

When you tighten the **Bolt**, it should clamp the **Spacer** and **Washer** tight against the frame, and the **Side Table** should move around freely on the spacer.

Do the same thing the other slot, then do the other **Side Table**.

Now, install the same stack of parts (**Bolt, Washer, Spacer**) in the second hole down, just below the one the **Side Tables** pivot on. This will not go through a hole in the table, but the open slot in the table will engage it when you fold the shelves up.

1-4-2012

PARTY KING	
Assy, MVP Cradle	
372950Instructions	SHEET 2 OF 3

**4.** Now take the **Back Panel** (2), and bolt it to the **Sides**. It attaches with the exact same stack of parts (**Bolt, Washer, and Spacer**) as we used on the **Tables**. When you tighten the bolts, the **Back Panel** should swing freely.

The spring pins in the side frames should engage the lower holes in the **Back Panel** to hold it closed. Pulling out on the spring pins should allow the **Back Panel** to hinge upward to allow access to the Grill's ash tray.

**5.** Now that everything is together, tighten the six **M8 Bolts and Nuts** that hold the **Sides** to the **Cradle Weldment**.

6. There are 3 **Hooks** and 6 **Nuts** in the hardware package. (These aren't shown on the picture). There are 3 holes on each edge of each shelf, so that you can mount the hooks wherever is convenient for you. To mount the hooks, spin a nut onto the threads, then put the hook in the hole and put another nut on the back. The nut can be left loose if you want the hook to swivel, or tightened up if you don't.

**All finished. Now you can mount your Grill Head into the Cradle, using the instructions that come with the Grill Head.**

1-4-2012

PARTY KING	
Assy, MVP Cradle	
372950 Instructions	SHEET 3 OF 3

Grill head housing (Cradle) rear access door latch bulletin.

The back panel has a small threaded bolt that screws on and serves as the “handle” of the rear door latch pin. Unscrew the handle and rotate the spring pin then reattach handle.

Note: Add drop of the thread locker from the tube included in the cradle should be added to keep the latch handle from ever coming loose.

You can see the picture of the pin as we have it packaged.



Attention: Instructions say two safety spring pins are used in the padlock holes of the mounting shoes of the MVP Cradle. There are no spring pins included in the hardware package. The pins are not needed; however, if you prefer you can use safety spring pins in place of padlocks. Party King Grills has pins in stock if you would like them. To order, email [CustomerService@PartyKingGrills.com](mailto:CustomerService@PartyKingGrills.com) requesting a set of two and we will gladly send them to you at no cost; just pay \$9.50 shipping.

Attention: The main beam of the MVP Cradle (grill head housing), which has the mounting shoes welded to it, has four triangle plates with three holes in each of the plates. **Do not use the center hole on the triangle plates.** The center hole is not used in this application of the beam.

Instructions for attaching the T-bolt to the mounting shoe are not included. However, if you have questions, the following instructions explain how to install them. Find the two 3/16" x 2 1/2" bolts, nuts, and lock washers in the plastic hardware bag. Note: There are two extra T-bolt knobs in the addendum hardware bag. Use these instead of the ones in the original hardware package. When these are used the spacers will not be necessary. Locate the mounting shoes which are U-shaped metal components welded to the center beam that has the two triangle plates welded to each end. Insert the T-bolt in between the two curled sleeves located on the bottom side of the mounting shoe. Then insert the bolt through the mounting shoe and T-bolt. Position the nut on the inner side of the shoe and remember to use a drop of thread locker on the bolt before you attach the lock washer and nut.

**If the grill is going to be used with an ice chest tray, skip the step assembling the left side lift handle to the MVP Cradle.** The left side lift handle cannot be used on the MVP Cradle if the ice chest tray option is used. To install and remove a grill without handles simply pick the grill up under the bottom cradle frame.

### **Attaching the grill head to the cradle (grill head housing)**

After assembling the MVP Cradle you are ready to attach the grill to the cradle. After the VA is assembled and attached to your vehicle hitch, attach the MVP Cradle to the rear swing arm and swing it open then lower the prop legs to the ground and lock in place.

Next, find the two Mount Tabs (9) the four M6 Bolts (3). Next, go to the back lower corners of the grill head and locate the two threaded holes located in the outer bottom corners and bolt the tabs to the grill head. Note: The brackets can be attached two ways but they only fit the grill to the cradle in if the brackets slope down and away from the grill.

Place the grill into the cradle and bolt the front of the grill first with two of the M8 Bolts (6) and the Spacers (5 & 8) next go to the back side of the cradle and repeat using a nut on those two bolts. Then front two bolts have the nuts riveted into the front of the grill and the back two each use a lock nut. Use a short spacer between the grill and cradle on all four grill head attachment locations.

Attention: If Swing Arm is not level when open it may require adjusting. The arm is built to be slightly higher at the latch end to aid in lifting the arm when latching to front main beam however from time to time during the welding process the heat from the weld makes the arm slightly high at outer end while fully opened (90 degree from rear bumper). To level the arm simply prop or block the arm hinge point (passenger side of vehicle) to stabilize it then force the arm down. The arm will bend enough to make it set level without damaging the arm. The arm is very strong and you will not damage it when you slightly bend it down at the open end.

**Questions or comments:** email <[CustomerService@PartyKingGrills.com](mailto:CustomerService@PartyKingGrills.com)>

> If you desire personal assistance please call our warehouse non published customers only help desk (580) 772-4238 | M-F | 9AM-4PM (CST)