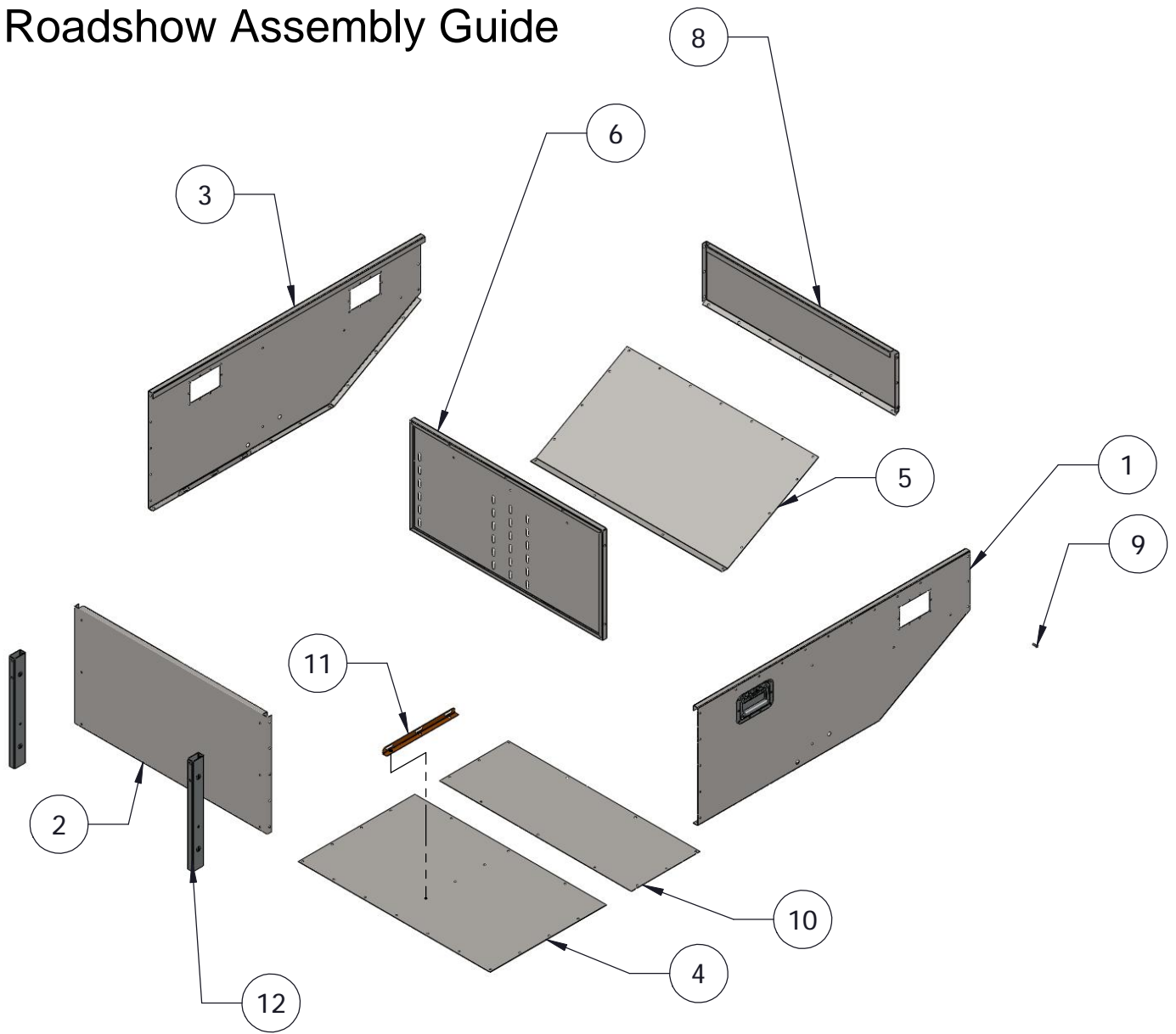
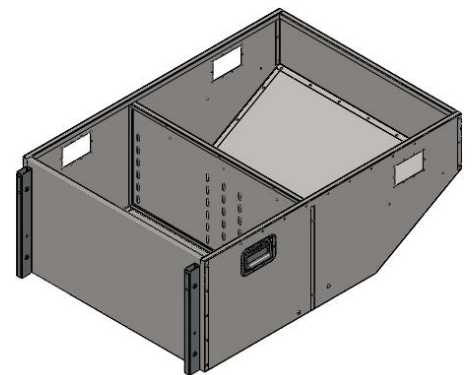


Roadshow Assembly Guide



Item	DESCRIPTION	QTY.
1	Box Side	1
2	Bottom	1
3	Box Side, Left	1
4	Back	1
5	Back 2	1
6	Shelf	1
7		
8	Top	1
9	Bolt, M5 x 16 Button Hd SS	64
10	Back 3	1
11	Angle, Tiedown	1
12	Skid	2



1-4-2012

Congratulations on your new RoadShow!

Assembly is in two stages. First, we will assemble the basic box, and then we will install the doors and small parts. Before we start:

A. Put all the nuts and bolts and small parts in a cake pan or cookie sheet so you can see them and find what you need without digging through a bunch of plastic bags.

B. Make sure you have enough space to work. If you are working on a concrete floor, spread out some cardboard or a rug so you don't scratch the paint on your new RoadShow.

Stage One Assembly-The Box.

1. Get out the **Shelf** (6), the **Right Side** (1), and the **Left Side** (3), and two of the **M5 Bolts**. Bolt the Shelf to the Sides with one bolt on each side. Leave the bolts loose for now, and don't worry about the other other bolt holes in the shelf-we will get to them later.

2. Find the **Bottom** (2), and bolt it to the **Sides** with 10 more of the **M5 Bolts**. Leave the bolts loose.

3. The **Top** (7) goes on next. Bolt it to the **Sides** with 3 **M5 Bolts** on each side. Leave them loose.

4. Find the **Back** (4) and the **Tiedown** (11) and bolt them together. It doesn't matter which way the Tiedown goes, and it doesn't matter which side of the Back you put it on. Go ahead and tighten these bolts.

1-4-2012

PARTY KING	
Assy, Box, Roadshow	
372801 Instructions	SHEET 2 OF 3

5. Now take the **Back** (4), and bolt it to the back of the box. It attaches to the **Sides** and the **Bottom** with **13 M5 Bolts**. The **Tiedown** goes inside the box. Leave the bolts loose.

6. Put the **Back 3** (10) on next. Attach it to the **Sides** and the **Back** with 7 of the **M5 Bolts**. Leave the bolts loose.

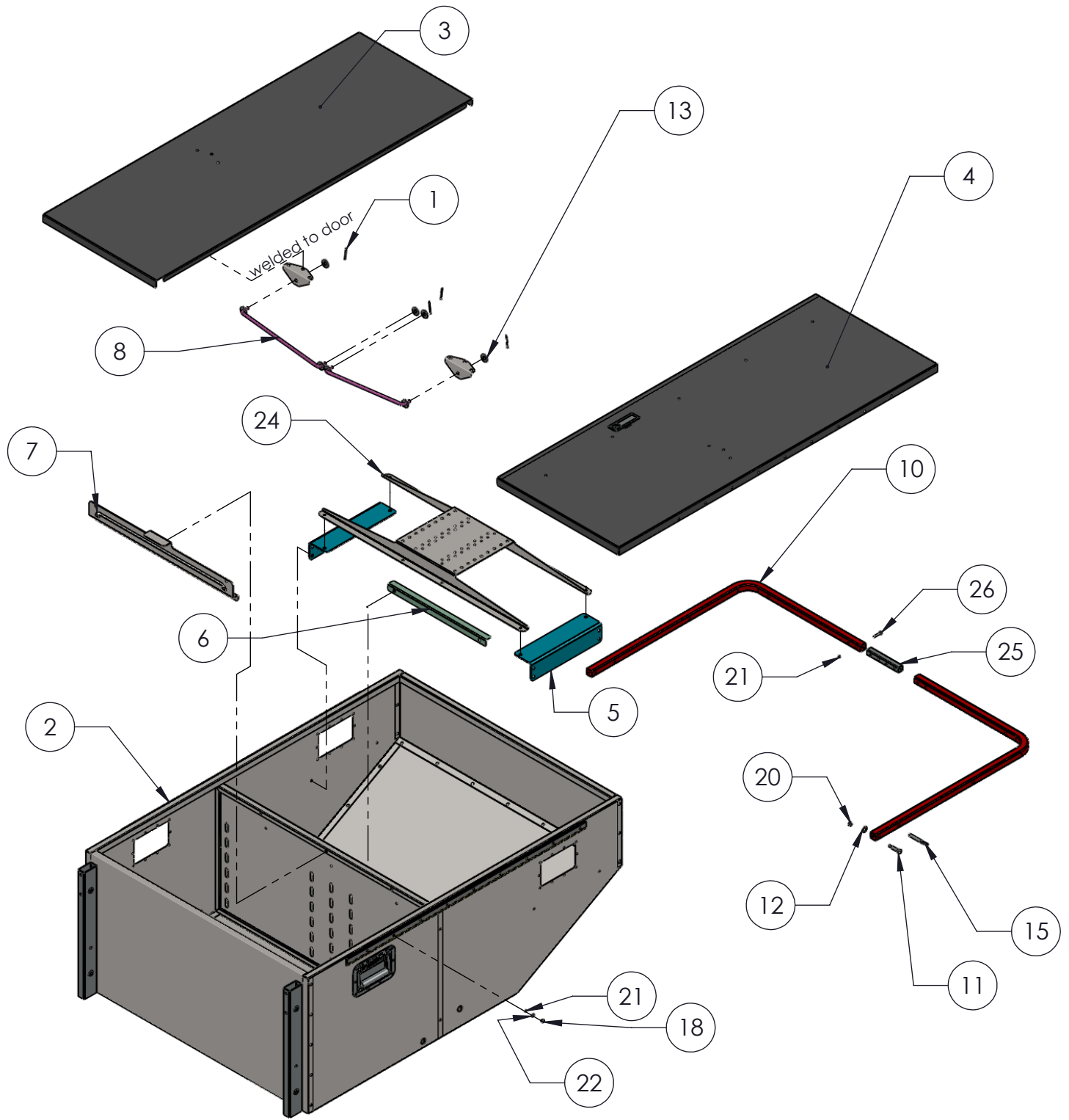
7. Put the **Back 2** (5) on. Put just 4 or 5 of the **M5 bolts** in to hold it for now. In a bit, we will take it off to make it easier to install the display.

8. Find the two **Skids** (12), and mount them to the **Bottom** with **6 M5 Bolts**. The end of the **Skid** with the two small holes on the bottom is the end that goes toward the open side of the box. Tighten these bolts.

9. Now that you have the box completely assembled, tighten all the bolts fully.

10. The box is done, and we are now ready to install the finishing parts.

1-4-2012



1-4-2012

Item	DESCRIPTION	Default/ QTY.
1	Cotter Pin	4
2	Assy, Box, Roadshow	1
3	Door, Left	1
4	Door, Right	1
5	Mount, Display	2
6	Receiver Stop	1
7	Door Stop Slot Bracket	1
8	Door Link	2
9		
10	Stabilizer, Swing	2
11	Bolt, M8 x 25 Shoulder	2
12	Washer, M6 Flat	2
13	Washer, M8 Flat	4
14		
15	Pin, M8 x 40 Ball-Lock	2
16		
17		
18	Bolt, M5 x 6 Button Hd SS	18
19	Bolt, M5 x 16 Button Hd SS	16
20	Nut, M6	2
21	Nut, M5 Hex Jam	22
22	Washer, M5 Flat	18
23	Latch, Trigger	1
24	Mount, TV, Steel	1
25	Tube, Connector	1
26	Bolt, M5 x 25 Button Hd SS	4

1-4-2012

Stage Two Assembly-The Rest of it.

1. Now that we have the basic box done, we will install the doors and a few smaller parts. We'll do the small parts first, so we don't have the doors in the way while we work.

2. Find the **Door Stop Slot Bracket** (7), the **Door Links** (8), **M8 Washers** (13), and **Cotter Pins** (1). Stick one end of a Link through the slot in the **Bracket**, then put on a Washer and the Cotter Pin. The bottom side of the Bracket is the one with the small tab hanging down, and that's the side the Link should be on. The Washers and Cotter Pins should be on top. Do the same thing with the other Link. Bend the Cotter Pins back around the Link so they aren't sticking out. The Links will be loose in the slot, and free to slide back and forth.

3. Take that whole assembly and bolt it to the bottom of the shelf with the **Medium M5 Bolts** (19), and tighten them.

4. Find the two **Stabilizers** (10), the **Connector Tube** (25), **Long M5 Bolts** (26), and **M5 Nuts** (21). The **Connector Tube** may be inside the **Stabilizers** for shipping--look for it there before you panic. Slide the Connector into the Stabilizer, and bolt it together, then slide the other Stabilizer onto the Connector and bolt it. When you are finished, it should look like a big U.

5. Find the **Shoulder Bolts** (11), **M8 Washers** (12), and **M6 Nuts** (20). Make sure you have the nuts that screw onto the Shoulder Bolts and not the smaller ones. Put one of the Shoulder Bolts through the end hole in the Stabilizer, then put the Washer on the Bolt, then stab the bolt through the box and the shelf. The hole for it is the one on the side of the box, towards the back. Be careful to get the bolt through the hole in the shelf, too. Put the M6 Nut on the bolt and tighten it. It will be pretty hard to get a wrench on the nut down in there. Make sure that the Washer is up on the fat part of the bolt and not pinched under it, and then do the same thing on the other end of the Stabilizer. When we're finished, the Stabilizer should swing back and forth easily.

6. Use the two **Ball-Lock Pins** (15) to pin the **Stabilizer** in place so it doesn't flop around. The pins go through the Stabilizer and into a hole in the side of the box.

1-4-2012

7. Find the **Left Door** (3) (it's the one without the latch), the **Short M5 Bolts** (18), the **M5 Nuts** (21), and the **M5 Washers** (22). The door bolts to the outside of the hinge on the box. The Bolt goes through the door, then through the hinge, then the Washer and the Nut go on the inside of the hinge. Holding the door in position while you do this is awkward, but much easier if you have a **Helper** (not included in package). Install the bolts at the ends first, then all the ones between them. When all of the bolts are in, tighten them.

8. Do the same thing with the **Right Door** (4).

9. Find two more **M8 Washers** (13) and **Cotter Pins** (1), and connect the **Door Links** (8) to the **Doors**. Bend the Cotter Pins back around the Link so they aren't sticking out. The doors should now swing open until the Link stops it. To release to door, pull out on the link, then swing the door shut. Always close the Left Door First, then the Right Door.

10. Make sure that the **Right Door** latches nice and tight to the Shelf. It should take a firm push with your thumb to latch it. If you have to use both hands or a hammer, it's too tight. You can adjust the tightness of the latch with the screw on the back, but make sure you tighten the jam nut on the latch adjuster if you mess with it.

11. Remember when we didn't put all the bolts in the Back Panel? Here's when that pays off. Take the Back off so we have easier access for the next steps.

1-4-2012

12. Find the **Receiver Stop** (6), two **Medium M5 Bolts** (19), and two **M6 Flat Washers** (12). The purpose of the Receiver Stop is to keep your Receiver (or DVD Player, or whatever device you install) from sliding back against the back of the box when we lay it down on its back. So, figure out where you want to mount your device, and bolt the Receiver Stop just behind it, in whichever pair of slots is convenient. Strap the Receiver down firmly.

13. Find the **Display Mounts**, and bolt them inside the box using the **Medium M5 Bolts** (19). There are two sets of holes in the Mounts, so that different thicknesses of displays will work. Start with the mounts as far back as possible, and only move them if your display is thin, and you want it out closer to the opening. Leave the bolts loose for now.

14. Install the **TV Mount** (24) to the two **Display Mounts**, using the **Medium M5 Bolts** (19). Tighten the bolts, and then tighten the ones that hold the Display Mounts to the sides of the box.

15. Get your **Helper** again, and have them hold your **display** in position while you bolt it to the **TV Mount** with whichever bolts fit, using whichever holes work. The TV Mount has a lot of holes, to fit 3 different bolt patterns, in several different positions, so your helper is going to have to hold for a while so you can figure out which 4 holes to use. Make certain that the bolts you are using actually fit your display-if they won't tighten up, they aren't the right ones!

16. Wire up your **Receiver** and **Display**. Make sure it all works before you put the Back on the box.

17. Put the **Back** on the box and tighten all the bolts.

18. Make one more trip around the entire thing, making sure everything is tight.

19. All Done! Go get your **Helper** a **Cold Beverage** (not included in package), and sit in the driveway and watch something, just to make absolutely sure it all works fine. Two or three hours should do it.