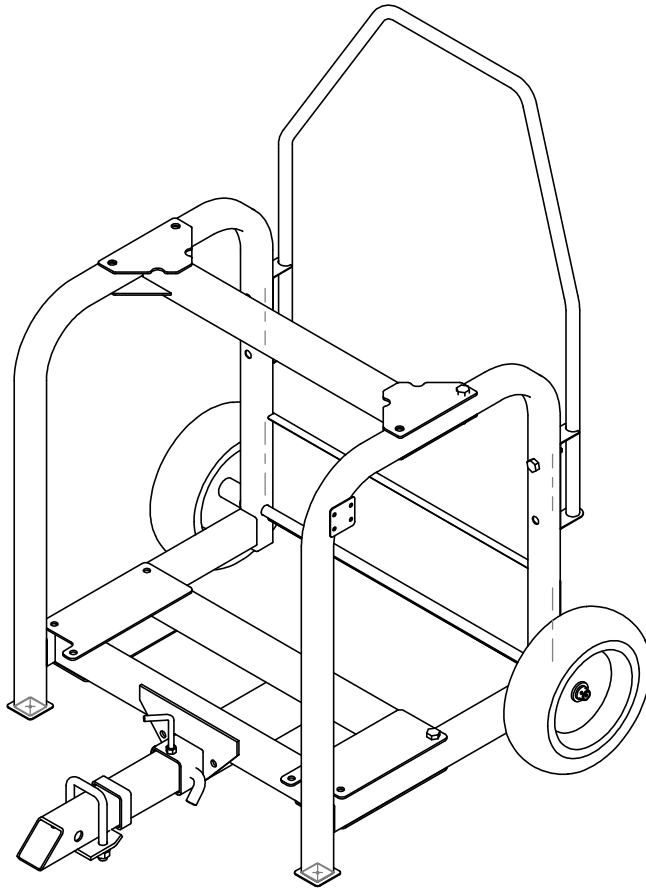
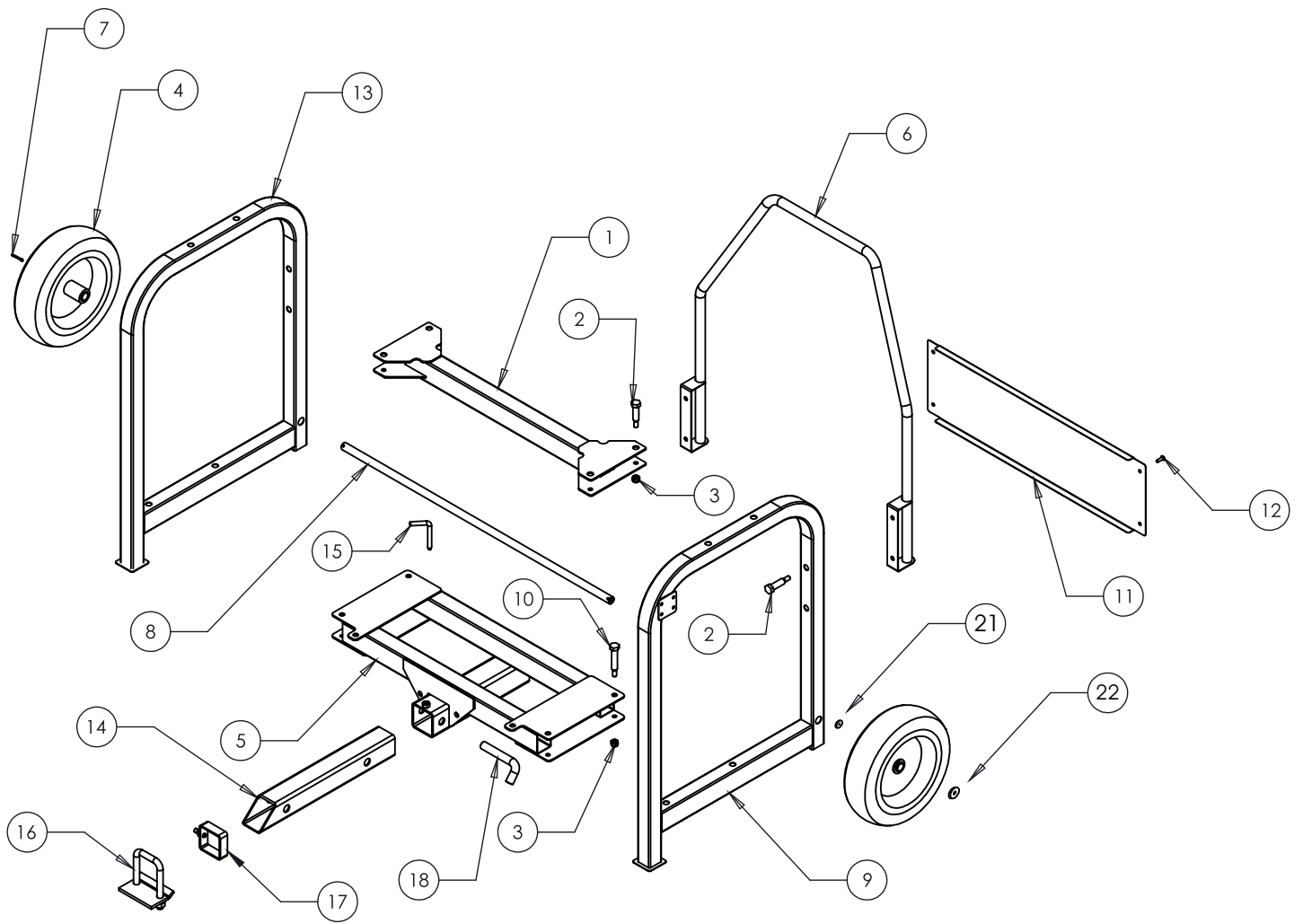




TAILGATE TRANSPORT





ITEM	PART NO.	DESCRIPTION	QTY.
1	373104	Cross Beam, Upper	1
2	373123	Bolt, M12 x 55	8
3	372911	Nut, M8 Nylock	12
4	372715	Wheel	2
5	373105	Cross Member, Lower	1
6	373113	Rear Handle	1
7	372702	Cotter Pin	2
8	373124	Axle	1
9	373117	End Frame, LH	1
10	373122	Bolt, M12 x 70	4
11	373127	Panel, Rear	1

ITEM	PART NO.	DESCRIPTION	QTY.
12	372836	Bolt, M5 x 16 Button Hd SS	4
13	373130	End Frame, RH	1
14	373064	Tube, Drawbar	1
15	373134	Bolt, M8 L-Shaped	1
16	372980	Assy, Hitch Cuff	1
17	373133	Drawbar Stop Assy	1
18	373135	Hitchpin, M8 L-Shaped	1
19	373137	Safety Chains	1
20	373136	Bolt, Set Screw	2
21	373138	10mm Spacer	2
22	372734	Washer flat m 16	2

Assembly of Tailgate Transport

Assembly Instructions for PKA-TTP-1700

1. **Unpack parts and hardware.**
2. **Place end frame (9) flat on assembly surface. Then find upper crossbeam (1) and attach end frame top (curved) end. Next take lower cross member (5) and attach to end frame lower cross member with four (10) bolts and four (3) nylock nuts.**
3. **Repeat step 2 to install right end frame (13) with upper cross beam (1) and lower cross member (5) using four (10) bolts and four (3) nylock nuts.**
4. **Install rear handle (6) with four (2) bolts and four (3) nylock nuts.**
5. **Install axle (8) through holes in end frames, then add spacer (21) over end of axle, then attach wheel. Then slide washer (22) over axle and insert cotter pin (7) and spread open cotter pin.**
6. **Install rear panel (11) with four button head bolts (12).**
7. **Install draw-bar (14) into vehicle hitch with bevel up as shown in picture. Secure with hitch-pin (18).**
8. **Slide draw-bar stop (17) over drawbar, all the way up to the vehicle hitch. Tighten the (20) set-screw to hold it in place. This stop will make it easier to connect your Tailgate Transport to the vehicle by making the holes line up perfectly. If you use it on a different vehicle, you may need to re-adjust the stop. After draw-bar stop set, remove draw-bar and proceed to step ten.**
9. **Install draw-bar (14) into lower cross-member (5) and secure with hitch-pin (18)**
10. **Install and tighten (15) L-shaped bolt to (5) cross-member lower (top of Tailgate Transport's receiver hitch) to prevent rattling and movement during transport.**
11. **Hitchcuff (16) can be used when the TT is mounted to you vehicle to prevent movement and rattling between the drawbar and vehicle during transport.**

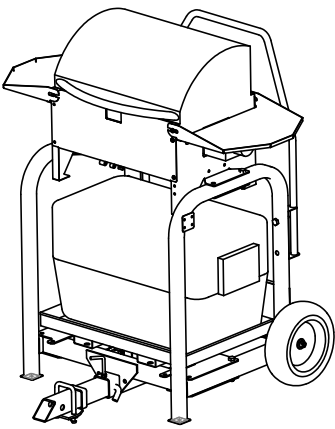
Warranty Information:

Because of the nature of this product being used as an automotive attachment, and the damage it can sustain due to driving habits, road conditions, etc., Party King@Grills will warranty VARSITY Grill and Cradle for one year against defects, workmanship or construction issues.

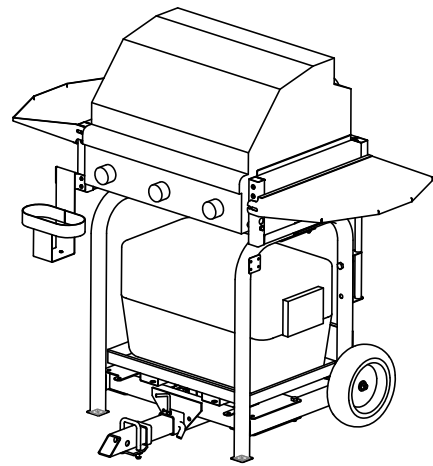
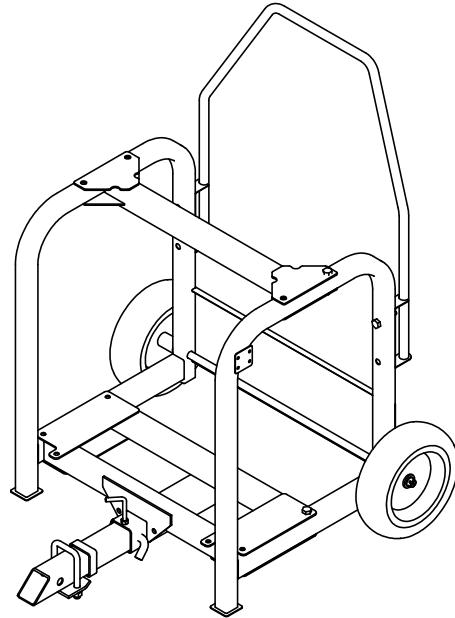
PAINT AND FINISH: Due to the nature of this product, Party King@Grills cannot warranty the VARSITY Grill and Cradle paint or finish. In time, the rear arm will show scratches and wear. This is normal, due to the Grill and/or accessories attaching to the VARSITY Grill and Cradle. A can of black spray paint is all you need to touch it up from time to time.

If you have questions or comments please send them to customerservice@PartyKingGrills.com or call our toll free voice mail at 1-877-788-5464 and one of our customer service representative will return you call in 24 hours or less. (Excluding weekends and holidays)

Party King ® is a US registered trademark. SWING' N SMOKE™ Tailgate Grill is a trademark of Party King@Grills. VARSITY Grill and Cradle™ is a trademark of PARTY KING@Grills for more information or customer service visit www.partykinggrills.com



Shown with: **VARSITY GRILL™**



Shown with: **MVP GRILL™**

Thank you for choosing



Party with the King!™

www.PartyKingGrills.com